

3.5"

4.5"



Maxforce®

COMPLETE ACCEPTED

DOC ID 539924

FOR REGISTRATION

BRAND **GRANULAR INSECT BAIT**

9/8/2014

FOR INDOOR AND OUTDOOR CONTROL OF ANTS, CRICKETS AND ROACHES¹
FOR USE IN AND AROUND STRUCTURES AND RESIDENTIAL AREAS

ACTIVE INGREDIENTS:

Hydramethylnon†; tetrahydro-5, 5-dimethyl-2(1H)-pyrimidinone,
(3-(4-(trifluoromethyl) phenyl)-1-(2-(4-(trifluoromethyl) phenyl)
ethenyl)-2-propenylidene) hydrazine.....1.00%

OTHER INGREDIENTS:.....99.00%

TOTAL:.....100.00%

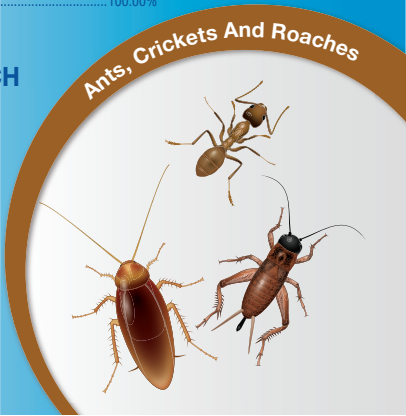
†CAS No. 67485-29-4
EPA Reg. No. 432-1255
EPA Est. No. 67572-GA-1

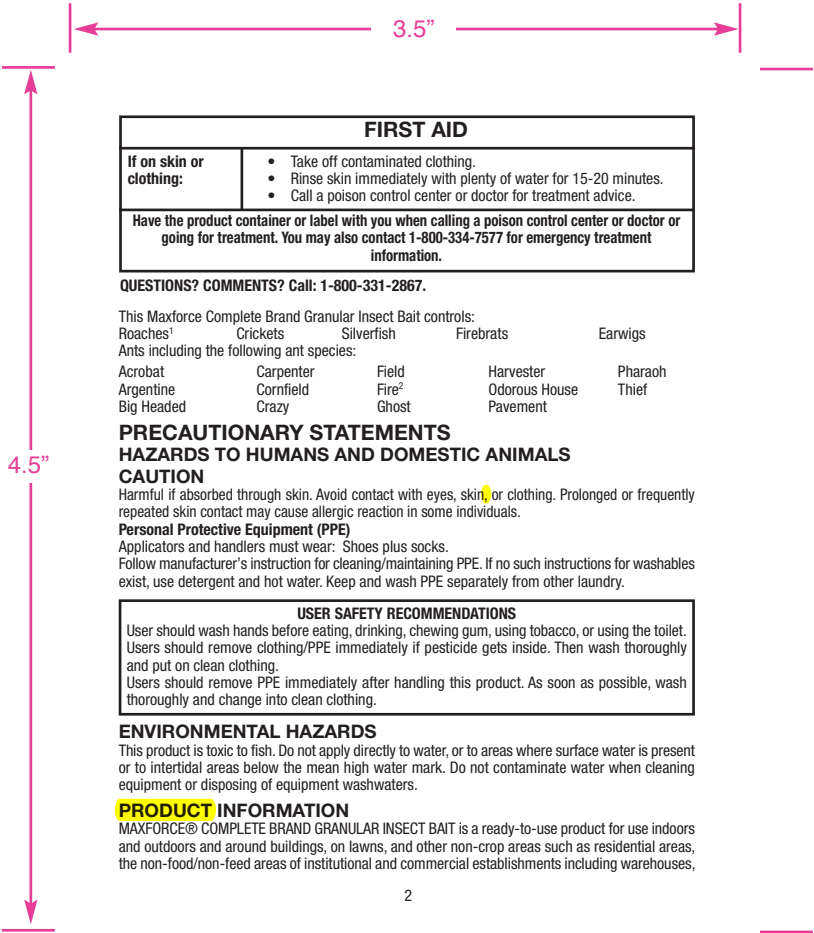
New York State Department
of Environmental Conservation
Division of Materials Management
Pesticide Product Registration

**KEEP OUT OF REACH
OF CHILDREN
CAUTION**

**PRECAUTION: AL USUARIO: Si
usted no lee ingles no use este
producto hasta que la etiqueta
le haya sido explicada
ampliamente.**

Net Weight
8 Ounces (227 g)
79898851
80021658C 140307AV1





FIRST AID

If on skin or clothing:	<ul style="list-style-type: none"> • Take off contaminated clothing. • Rinse skin immediately with plenty of water for 15-20 minutes. • Call a poison control center or doctor for treatment advice.
<p>Have the product container or label with you when calling a poison control center or doctor or going for treatment. You may also contact 1-800-334-7577 for emergency treatment information.</p>	

QUESTIONS? COMMENTS? Call: 1-800-331-2867.

This Maxforce Complete Brand Granular Insect Bait controls:
 Roaches¹ Crickets Silverfish Firebrats Earwigs
 Ants including the following ant species:
 Acrobat Carpenter Field Harvester Pharaoh
 Argentine Cornfield Fire² Odorous House Thief
 Big Headed Crazy Ghost Pavement

**PRECAUTIONARY STATEMENTS
 HAZARDS TO HUMANS AND DOMESTIC ANIMALS**

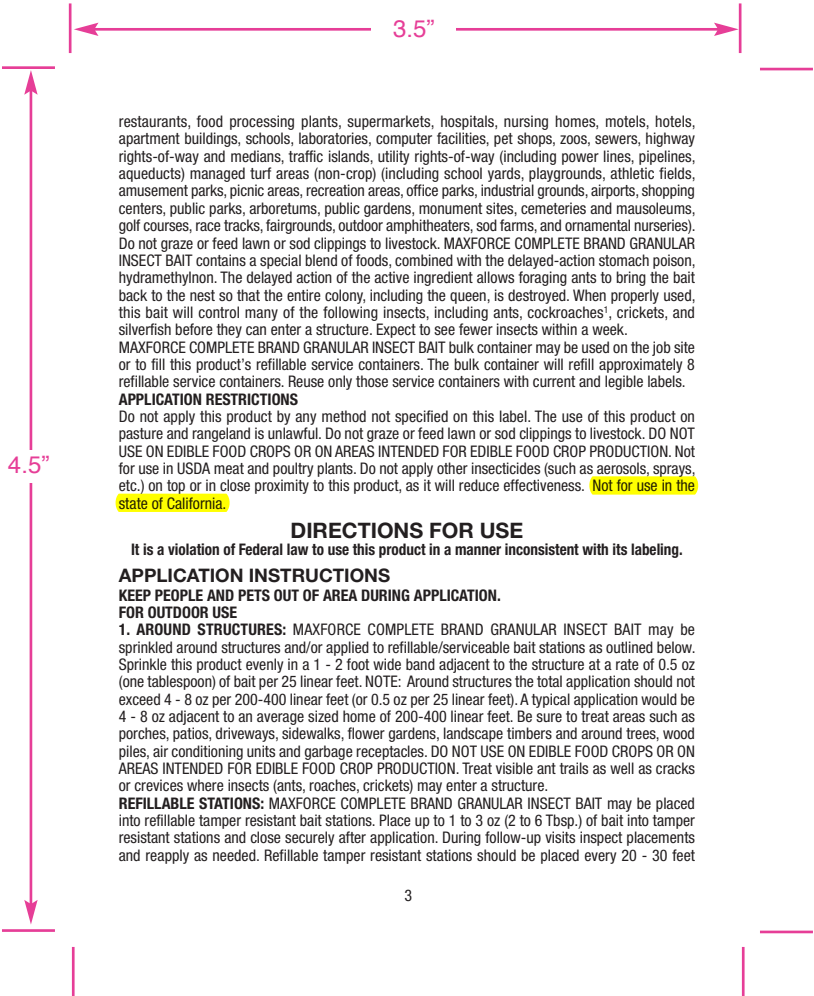
CAUTION
 Harmful if absorbed through skin. Avoid contact with eyes, skin or clothing. Prolonged or frequently repeated skin contact may cause allergic reaction in some individuals.

Personal Protective Equipment (PPE)
 Applicators and handlers must wear: Shoes plus socks.
 Follow manufacturer's instruction for cleaning/maintaining PPE. If no such instructions for washables exist, use detergent and hot water. Keep and wash PPE separately from other laundry.

USER SAFETY RECOMMENDATIONS
User should wash hands before eating, drinking, chewing gum, using tobacco, or using the toilet. Users should remove clothing/PPE immediately if pesticide gets inside. Then wash thoroughly and put on clean clothing. Users should remove PPE immediately after handling this product. As soon as possible, wash thoroughly and change into clean clothing.

ENVIRONMENTAL HAZARDS
 This product is toxic to fish. Do not apply directly to water, or to areas where surface water is present or to intertidal areas below the mean high water mark. Do not contaminate water when cleaning equipment or disposing of equipment washwaters.

PRODUCT INFORMATION
 MAXFORCE® COMPLETE BRAND GRANULAR INSECT BAIT is a ready-to-use product for use indoors and outdoors and around buildings, on lawns, and other non-crop areas such as residential areas, the non-food/non-feed areas of institutional and commercial establishments including warehouses,



restaurants, food processing plants, supermarkets, hospitals, nursing homes, motels, hotels, apartment buildings, schools, laboratories, computer facilities, pet shops, zoos, sewers, highway rights-of-way and medians, traffic islands, utility rights-of-way (including power lines, pipelines, aqueducts) managed turf areas (non-crop) (including school yards, playgrounds, athletic fields, amusement parks, picnic areas, recreation areas, office parks, industrial grounds, airports, shopping centers, public parks, arboretums, public gardens, monument sites, cemeteries and mausoleums, golf courses, race tracks, fairgrounds, outdoor amphitheaters, sod farms, and ornamental nurseries). Do not graze or feed lawn or sod clippings to livestock. MAXFORCE COMPLETE BRAND GRANULAR INSECT BAIT contains a special blend of foods, combined with the delayed-action stomach poison, hydramethylinon. The delayed action of the active ingredient allows foraging ants to bring the bait back to the nest so that the entire colony, including the queen, is destroyed. When properly used, this bait will control many of the following insects, including ants, cockroaches¹, crickets, and silverfish before they can enter a structure. Expect to see fewer insects within a week. MAXFORCE COMPLETE BRAND GRANULAR INSECT BAIT bulk container may be used on the job site or to fill this product's refillable service containers. The bulk container will refill approximately 8 refillable service containers. Reuse only those service containers with current and legible labels.

APPLICATION RESTRICTIONS

Do not apply this product by any method not specified on this label. The use of this product on pasture and rangeland is unlawful. Do not graze or feed lawn or sod clippings to livestock. DO NOT USE ON EDIBLE FOOD CROPS OR ON AREAS INTENDED FOR EDIBLE FOOD CROP PRODUCTION. Not for use in USDA meat and poultry plants. Do not apply other insecticides (such as aerosols, sprays, etc.) on top or in close proximity to this product, as it will reduce effectiveness. **Not for use in the state of California.**

DIRECTIONS FOR USE

It is a violation of Federal law to use this product in a manner inconsistent with its labeling.

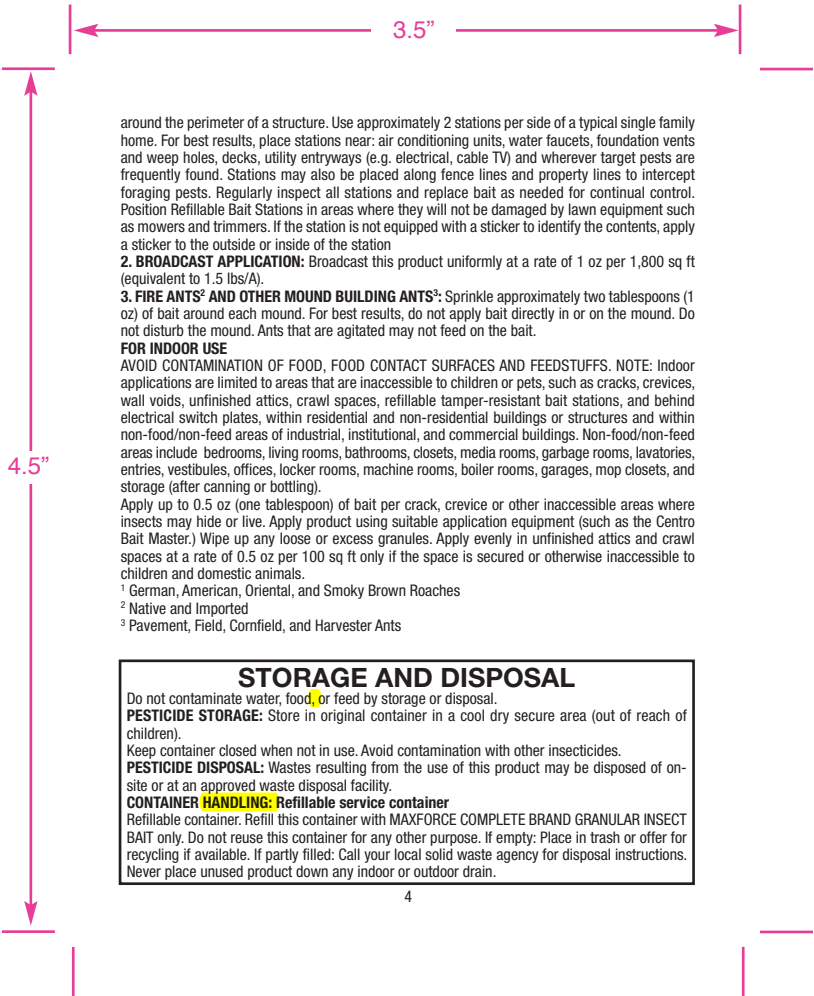
APPLICATION INSTRUCTIONS

KEEP PEOPLE AND PETS OUT OF AREA DURING APPLICATION.

FOR OUTDOOR USE

1. AROUND STRUCTURES: MAXFORCE COMPLETE BRAND GRANULAR INSECT BAIT may be sprinkled around structures and/or applied to refillable/serviceable bait stations as outlined below. Sprinkle this product evenly in a 1 - 2 foot wide band adjacent to the structure at a rate of 0.5 oz (one tablespoon) of bait per 25 linear feet. NOTE: Around structures the total application should not exceed 4 - 8 oz per 200-400 linear feet (or 0.5 oz per 25 linear feet). A typical application would be 4 - 8 oz adjacent to an average sized home of 200-400 linear feet. Be sure to treat areas such as porches, patios, driveways, sidewalks, flower gardens, landscape timbers and around trees, wood piles, air conditioning units and garbage receptacles. DO NOT USE ON EDIBLE FOOD CROPS OR ON AREAS INTENDED FOR EDIBLE FOOD CROP PRODUCTION. Treat visible ant trails as well as cracks or crevices where insects (ants, roaches, crickets) may enter a structure.

REFILLABLE STATIONS: MAXFORCE COMPLETE BRAND GRANULAR INSECT BAIT may be placed into refillable tamper resistant bait stations. Place up to 1 to 3 oz (2 to 6 Tbsp.) of bait into tamper resistant stations and close securely after application. During follow-up visits inspect placements and reapply as needed. Refillable tamper resistant stations should be placed every 20 - 30 feet



around the perimeter of a structure. Use approximately 2 stations per side of a typical single family home. For best results, place stations near: air conditioning units, water faucets, foundation vents and weep holes, decks, utility entryways (e.g. electrical, cable TV) and wherever target pests are frequently found. Stations may also be placed along fence lines and property lines to intercept foraging pests. Regularly inspect all stations and replace bait as needed for continual control. Position Refillable Bait Stations in areas where they will not be damaged by lawn equipment such as mowers and trimmers. If the station is not equipped with a sticker to identify the contents, apply a sticker to the outside or inside of the station

2. BROADCAST APPLICATION: Broadcast this product uniformly at a rate of 1 oz per 1,800 sq ft (equivalent to 1.5 lbs/A).

3. FIRE ANTS¹ AND OTHER MOUND BUILDING ANTS²: Sprinkle approximately two tablespoons (1 oz) of bait around each mound. For best results, do not apply bait directly in or on the mound. Do not disturb the mound. Ants that are agitated may not feed on the bait.

FOR INDOOR USE

AVOID CONTAMINATION OF FOOD, FOOD CONTACT SURFACES AND FEEDSTUFFS. NOTE: Indoor applications are limited to areas that are inaccessible to children or pets, such as cracks, crevices, wall voids, unfinished attics, crawl spaces, refillable tamper-resistant bait stations, and behind electrical switch plates, within residential and non-residential buildings or structures and within non-food/non-feed areas of industrial, institutional, and commercial buildings. Non-food/non-feed areas include bedrooms, living rooms, bathrooms, closets, media rooms, garage rooms, lavatories, entries, vestibules, offices, locker rooms, machine rooms, boiler rooms, garages, mop closets, and storage (after canning or bottling).

Apply up to 0.5 oz (one tablespoon) of bait per crack, crevice or other inaccessible areas where insects may hide or live. Apply product using suitable application equipment (such as the Centro Bait Master.) Wipe up any loose or excess granules. Apply evenly in unfinished attics and crawl spaces at a rate of 0.5 oz per 100 sq ft only if the space is secured or otherwise inaccessible to children and domestic animals.

¹ German, American, Oriental, and Smoky Brown Roaches

² Native and Imported

³ Pavement, Field, Cornfield, and Harvester Ants

STORAGE AND DISPOSAL

Do not contaminate water, food, or feed by storage or disposal.

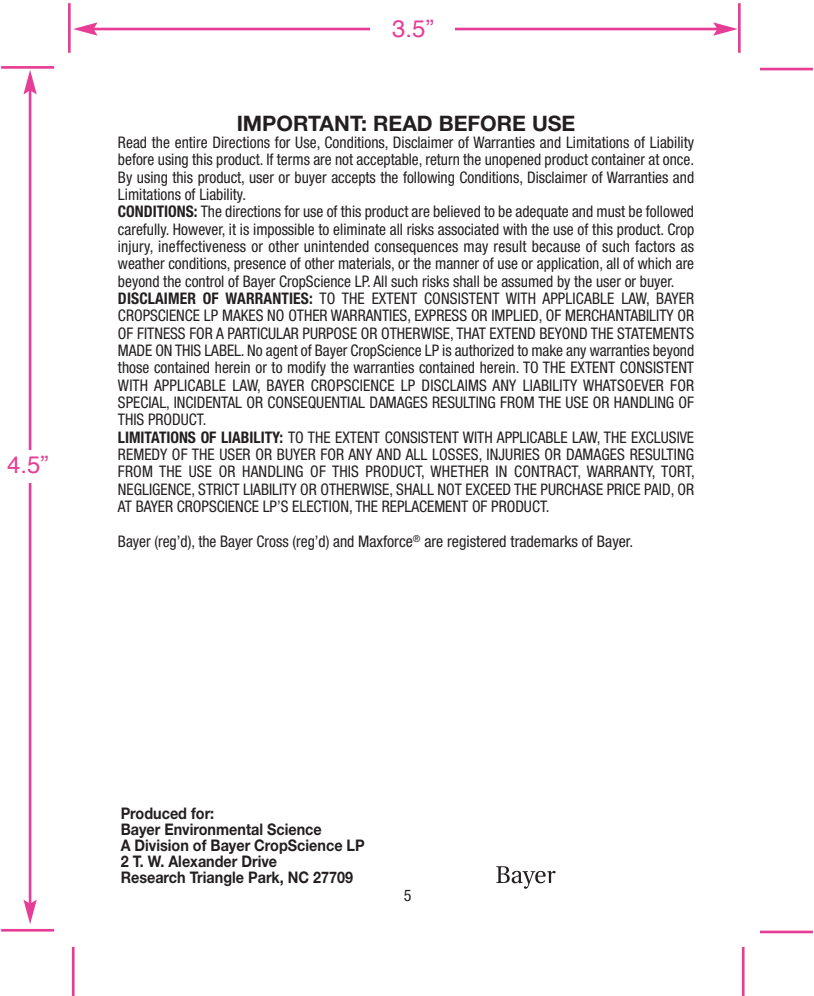
PESTICIDE STORAGE: Store in original container in a cool dry secure area (out of reach of children).

Keep container closed when not in use. Avoid contamination with other insecticides.

PESTICIDE DISPOSAL: Wastes resulting from the use of this product may be disposed of on-site or at an approved waste disposal facility.

CONTAINER HANDLING: Refillable service container

Refillable container. Refill this container with MAXFORCE COMPLETE BRAND GRANULAR INSECT BAIT only. Do not reuse this container for any other purpose. If empty: Place in trash or offer for recycling if available. If partly filled: Call your local solid waste agency for disposal instructions. Never place unused product down any indoor or outdoor drain.



IMPORTANT: READ BEFORE USE

Read the entire Directions for Use, Conditions, Disclaimer of Warranties and Limitations of Liability before using this product. If terms are not acceptable, return the unopened product container at once. By using this product, user or buyer accepts the following Conditions, Disclaimer of Warranties and Limitations of Liability.

CONDITIONS: The directions for use of this product are believed to be adequate and must be followed carefully. However, it is impossible to eliminate all risks associated with the use of this product. Crop injury, ineffectiveness or other unintended consequences may result because of such factors as weather conditions, presence of other materials, or the manner of use or application, all of which are beyond the control of Bayer CropScience LP. All such risks shall be assumed by the user or buyer.

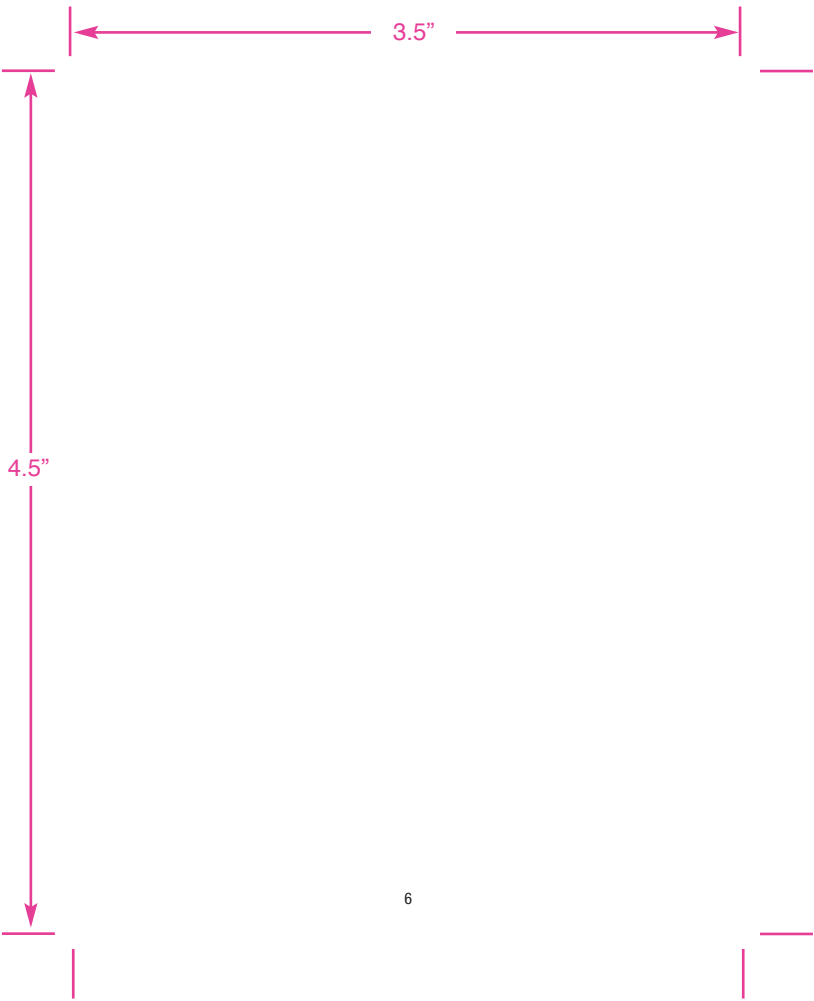
DISCLAIMER OF WARRANTIES: TO THE EXTENT CONSISTENT WITH APPLICABLE LAW, BAYER CROPSCIENCE LP MAKES NO OTHER WARRANTIES, EXPRESS OR IMPLIED, OF MERCHANTABILITY OR OF FITNESS FOR A PARTICULAR PURPOSE OR OTHERWISE, THAT EXTEND BEYOND THE STATEMENTS MADE ON THIS LABEL. No agent of Bayer CropScience LP is authorized to make any warranties beyond those contained herein or to modify the warranties contained herein. TO THE EXTENT CONSISTENT WITH APPLICABLE LAW, BAYER CROPSCIENCE LP DISCLAIMS ANY LIABILITY WHATSOEVER FOR SPECIAL, INCIDENTAL OR CONSEQUENTIAL DAMAGES RESULTING FROM THE USE OR HANDLING OF THIS PRODUCT.

LIMITATIONS OF LIABILITY: TO THE EXTENT CONSISTENT WITH APPLICABLE LAW, THE EXCLUSIVE REMEDY OF THE USER OR BUYER FOR ANY AND ALL LOSSES, INJURIES OR DAMAGES RESULTING FROM THE USE OR HANDLING OF THIS PRODUCT, WHETHER IN CONTRACT, WARRANTY, TORT, NEGLIGENCE, STRICT LIABILITY OR OTHERWISE, SHALL NOT EXCEED THE PURCHASE PRICE PAID, OR AT BAYER CROPSCIENCE LP'S ELECTION, THE REPLACEMENT OF PRODUCT.

Bayer (reg'd), the Bayer Cross (reg'd) and Maxforce® are registered trademarks of Bayer.

Produced for:
Bayer Environmental Science
A Division of Bayer CropScience LP
2 T. W. Alexander Drive
Research Triangle Park, NC 27709

Bayer



6.625"

3.5"

4.5"

FIRST AID

If on skin or clothing:	<ul style="list-style-type: none"> • Take off contaminated clothing. • Rinse skin immediately with plenty of water for 15-20 minutes. • Call a poison control center or doctor for treatment advice.
--------------------------------	---

Have the product container or label with you when calling a poison control center or doctor or going for treatment. You may also contact 1-800-334-7577 for emergency treatment information.

QUESTIONS? COMMENTS? Call: 1-800-331-2867.

**PRECAUTIONARY STATEMENTS
HAZARDS TO HUMANS AND DOMESTIC ANIMALS
CAUTION**

Harmful if absorbed through skin. Avoid contact with eyes, skin, or clothing. Prolonged or frequently repeated skin contact may cause allergic reaction in some individuals.

ENVIRONMENTAL HAZARDS

This product is toxic to fish. Do not apply directly to water, or to areas where surface water is present or to intertidal areas below the mean high water mark. Do not contaminate water when cleaning equipment or disposing of equipment washwaters.

STORAGE AND DISPOSAL

Do not contaminate water, food, or feed by storage or disposal.

PESTICIDE STORAGE: Store in original container in a cool dry secure area (out of reach of children).

Keep container closed when not in use. Avoid contamination with other insecticides.

PESTICIDE DISPOSAL: Wastes resulting from the use of this product may be disposed of on-site or at an approved waste disposal facility.

CONTAINER HANDLING: Refillable service container

Refillable container. Refill this container with MAXFORCE COMPLETE BRAND GRANULAR INSECT BAIT only. Do not reuse this container for any other purpose. If empty: Place in trash or offer for recycling if available. If partly filled: Call your local solid waste agency for disposal instructions. Never place unused product down any indoor or outdoor drain.



(01)00785740196632

Produced for:
Bayer Environmental Science
A Division of Bayer CropScience LP
2 T. W. Alexander Drive
Research Triangle Park, NC 27709



**Maxforce[®]
COMPLETE**

BRAND **GRANULAR INSECT BAIT**

FOR INDOOR AND OUTDOOR CONTROL OF ANTS, CRICKETS AND ROACHES*

FOR USE IN AND AROUND STRUCTURES AND RESIDENTIAL AREAS

ACTIVE INGREDIENTS:

Hydramethylnon†: tetrahydro-5, 5-dimethyl-2(1H)-pyrimidinone,
(3-(4-(trifluoromethyl) phenyl)-1-(2-(4-(trifluoromethyl) phenyl)

ethenyl)-2-propenylidene) hydrazine..... 1.00%

OTHER INGREDIENTS:..... 99.00%

TOTAL:..... 100.00%

†CAS No. 67485-29-4

EPA Reg. No. 432-1255

EPA Est. No. 67572-GA-1

**KEEP OUT OF REACH OF CHILDREN
CAUTION**

PRECAUTION: AL USUARIO: Si usted no lee ingles no use este producto hasta que la etiqueta le haya sido explicada ampliamente.

See inside leaflet for complete First Aid Instructions, Precautionary Statements, Directions for Use and Storage and Disposal Instructions.

Net Weight
8 Ounces (227 g)
79898851
80021658C 140307AV1

3.5"

4.5"



Maxforce[®] COMPLETE

BRAND GRANULAR INSECT BAIT

FOR INDOOR AND OUTDOOR CONTROL OF ANTS, CRICKETS AND ROACHES[†]
FOR USE IN AND AROUND STRUCTURES AND RESIDENTIAL AREAS

ACTIVE INGREDIENTS:

Hydramethylnon†; tetrahydro-5, 5-dimethyl-2(1H)-pyrimidinone,
(3-(4-(trifluoromethyl) phenyl)-1-(2-(4-(trifluoromethyl) phenyl)
ethenyl)-2-propenylidene) hydrazine.....1.00%

OTHER INGREDIENTS:.....99.00%

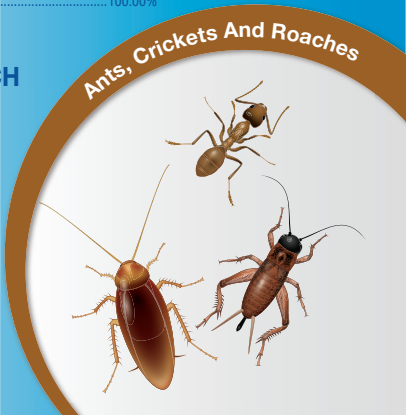
TOTAL:.....100.00%

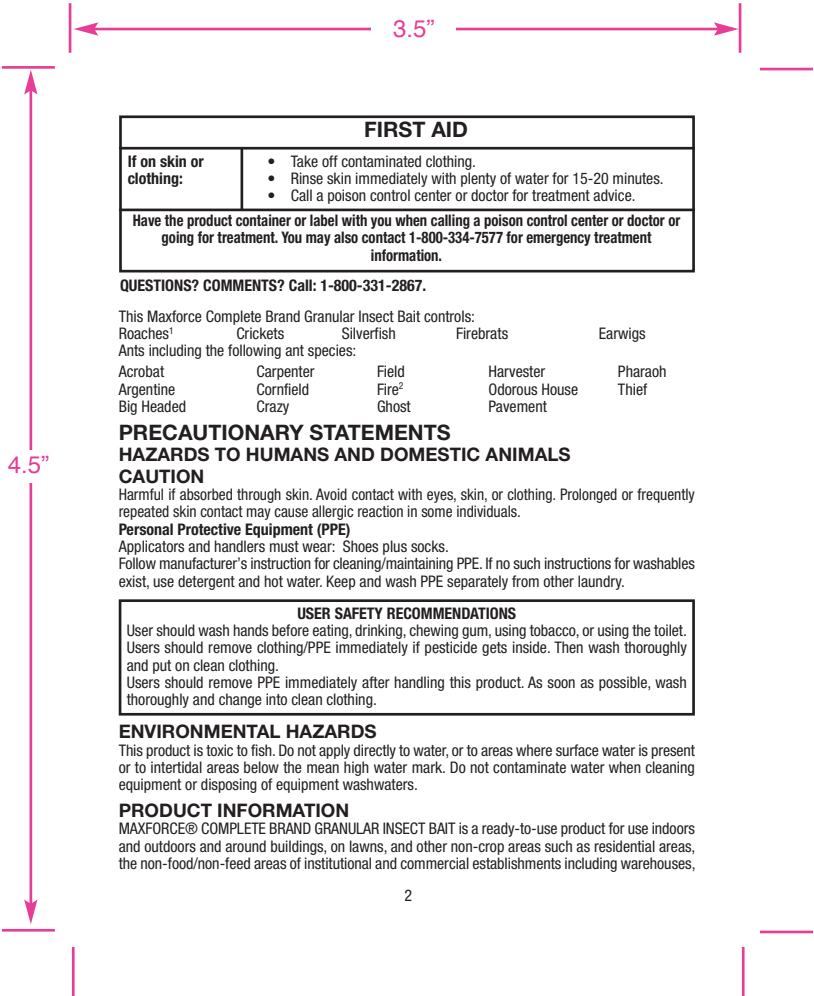
†CAS No. 67485-29-4
EPA Reg. No. 432-1255
EPA Est. No. 67572-GA-1

**KEEP OUT OF REACH
OF CHILDREN
CAUTION**

**PRECAUTION: AL USUARIO: Si
usted no lee ingles no use este
producto hasta que la etiqueta
le haya sido explicada
ampliamente.**

Net Weight
8 Ounces (227 g)
79898851
80021658C 140307AV1





FIRST AID

If on skin or clothing:	<ul style="list-style-type: none"> • Take off contaminated clothing. • Rinse skin immediately with plenty of water for 15-20 minutes. • Call a poison control center or doctor for treatment advice.
<p>Have the product container or label with you when calling a poison control center or doctor or going for treatment. You may also contact 1-800-334-7577 for emergency treatment information.</p>	

QUESTIONS? COMMENTS? Call: 1-800-331-2867.

This Maxforce Complete Brand Granular Insect Bait controls:
 Roaches¹ Crickets Silverfish Firebrats Earwigs
 Ants including the following ant species:
 Acrobat Carpenter Field Harvester Pharaoh
 Argentine Cornfield Fire² Odorous House Thief
 Big Headed Crazy Ghost Pavement

**PRECAUTIONARY STATEMENTS
 HAZARDS TO HUMANS AND DOMESTIC ANIMALS**

CAUTION
 Harmful if absorbed through skin. Avoid contact with eyes, skin, or clothing. Prolonged or frequently repeated skin contact may cause allergic reaction in some individuals.

Personal Protective Equipment (PPE)
 Applicators and handlers must wear: Shoes plus socks.
 Follow manufacturer's instruction for cleaning/maintaining PPE. If no such instructions for washables exist, use detergent and hot water. Keep and wash PPE separately from other laundry.

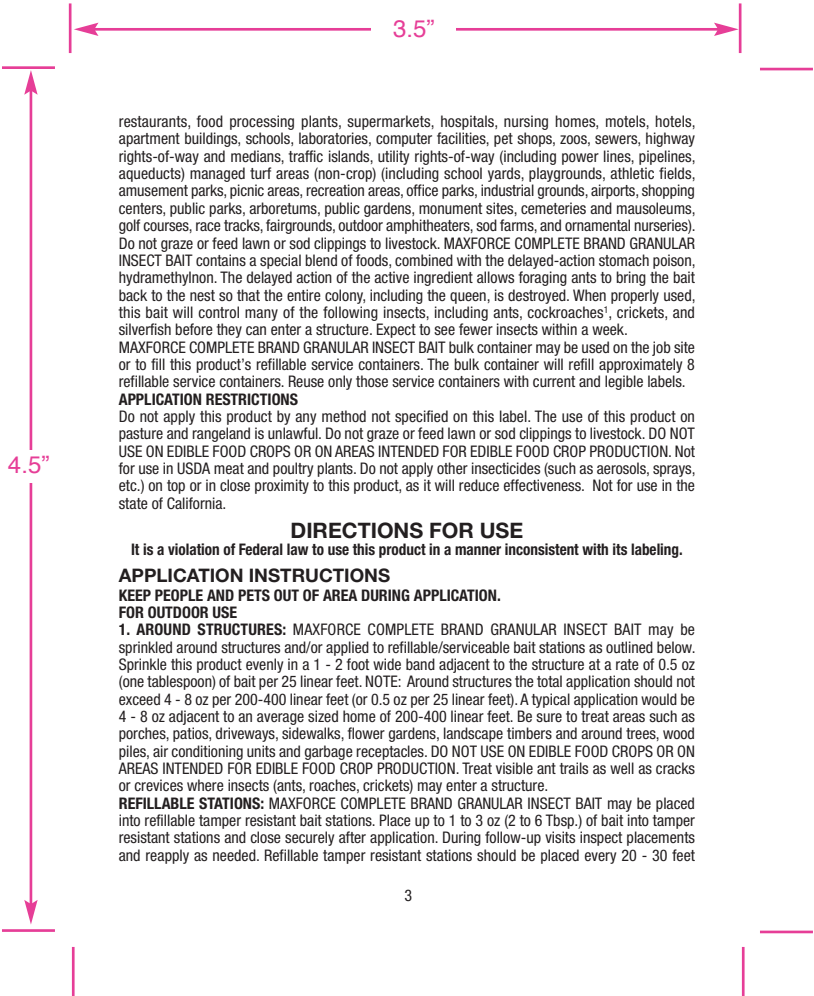
USER SAFETY RECOMMENDATIONS
User should wash hands before eating, drinking, chewing gum, using tobacco, or using the toilet. Users should remove clothing/PPE immediately if pesticide gets inside. Then wash thoroughly and put on clean clothing. Users should remove PPE immediately after handling this product. As soon as possible, wash thoroughly and change into clean clothing.

ENVIRONMENTAL HAZARDS

This product is toxic to fish. Do not apply directly to water, or to areas where surface water is present or to intertidal areas below the mean high water mark. Do not contaminate water when cleaning equipment or disposing of equipment washwaters.

PRODUCT INFORMATION

MAXFORCE® COMPLETE BRAND GRANULAR INSECT BAIT is a ready-to-use product for use indoors and outdoors and around buildings, on lawns, and other non-crop areas such as residential areas, the non-food/non-feed areas of institutional and commercial establishments including warehouses,



restaurants, food processing plants, supermarkets, hospitals, nursing homes, motels, hotels, apartment buildings, schools, laboratories, computer facilities, pet shops, zoos, sewers, highway rights-of-way and medians, traffic islands, utility rights-of-way (including power lines, pipelines, aqueducts) managed turf areas (non-crop) (including school yards, playgrounds, athletic fields, amusement parks, picnic areas, recreation areas, office parks, industrial grounds, airports, shopping centers, public parks, arboretums, public gardens, monument sites, cemeteries and mausoleums, golf courses, race tracks, fairgrounds, outdoor amphitheaters, sod farms, and ornamental nurseries). Do not graze or feed lawn or sod clippings to livestock. MAXFORCE COMPLETE BRAND GRANULAR INSECT BAIT contains a special blend of foods, combined with the delayed-action stomach poison, hydramethylinon. The delayed action of the active ingredient allows foraging ants to bring the bait back to the nest so that the entire colony, including the queen, is destroyed. When properly used, this bait will control many of the following insects, including ants, cockroaches¹, crickets, and silverfish before they can enter a structure. Expect to see fewer insects within a week. MAXFORCE COMPLETE BRAND GRANULAR INSECT BAIT bulk container may be used on the job site or to fill this product's refillable service containers. The bulk container will refill approximately 8 refillable service containers. Reuse only those service containers with current and legible labels.

APPLICATION RESTRICTIONS

Do not apply this product by any method not specified on this label. The use of this product on pasture and rangeland is unlawful. Do not graze or feed lawn or sod clippings to livestock. DO NOT USE ON EDIBLE FOOD CROPS OR ON AREAS INTENDED FOR EDIBLE FOOD CROP PRODUCTION. Not for use in USDA meat and poultry plants. Do not apply other insecticides (such as aerosols, sprays, etc.) on top or in close proximity to this product, as it will reduce effectiveness. Not for use in the state of California.

DIRECTIONS FOR USE

It is a violation of Federal law to use this product in a manner inconsistent with its labeling.

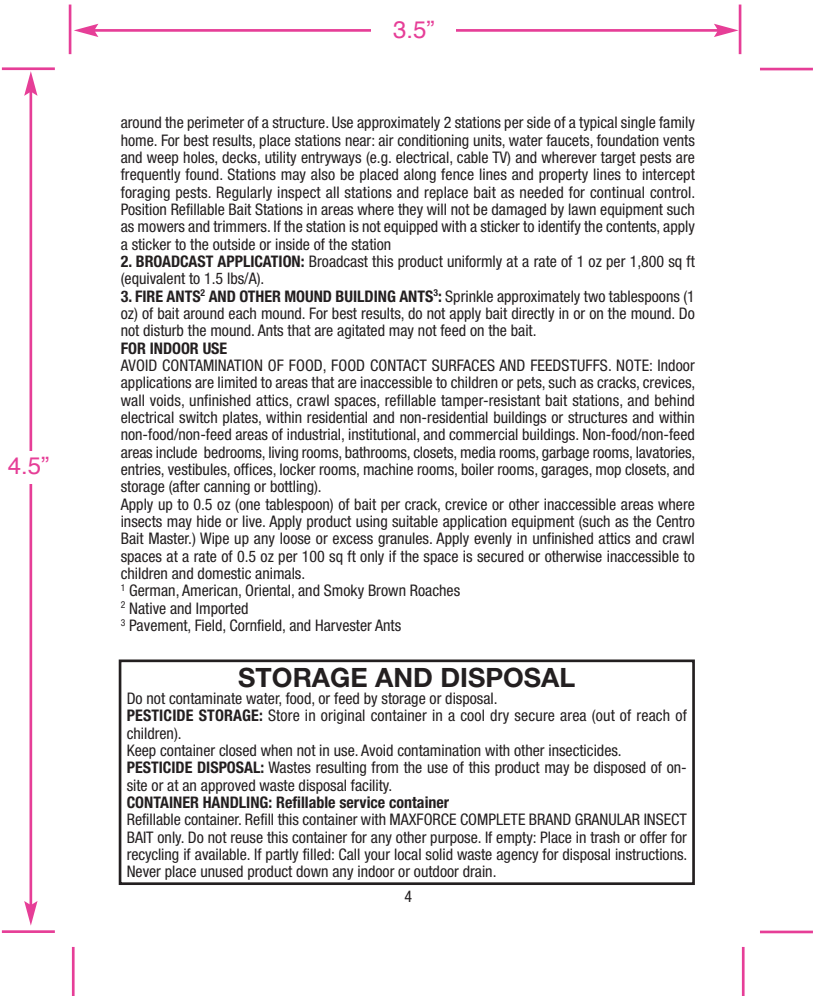
APPLICATION INSTRUCTIONS

KEEP PEOPLE AND PETS OUT OF AREA DURING APPLICATION.

FOR OUTDOOR USE

1. AROUND STRUCTURES: MAXFORCE COMPLETE BRAND GRANULAR INSECT BAIT may be sprinkled around structures and/or applied to refillable/serviceable bait stations as outlined below. Sprinkle this product evenly in a 1 - 2 foot wide band adjacent to the structure at a rate of 0.5 oz (one tablespoon) of bait per 25 linear feet. NOTE: Around structures the total application should not exceed 4 - 8 oz per 200-400 linear feet (or 0.5 oz per 25 linear feet). A typical application would be 4 - 8 oz adjacent to an average sized home of 200-400 linear feet. Be sure to treat areas such as porches, patios, driveways, sidewalks, flower gardens, landscape timbers and around trees, wood piles, air conditioning units and garbage receptacles. DO NOT USE ON EDIBLE FOOD CROPS OR ON AREAS INTENDED FOR EDIBLE FOOD CROP PRODUCTION. Treat visible ant trails as well as cracks or crevices where insects (ants, roaches, crickets) may enter a structure.

REFILLABLE STATIONS: MAXFORCE COMPLETE BRAND GRANULAR INSECT BAIT may be placed into refillable tamper resistant bait stations. Place up to 1 to 3 oz (2 to 6 Tbsp.) of bait into tamper resistant stations and close securely after application. During follow-up visits inspect placements and reapply as needed. Refillable tamper resistant stations should be placed every 20 - 30 feet



around the perimeter of a structure. Use approximately 2 stations per side of a typical single family home. For best results, place stations near: air conditioning units, water faucets, foundation vents and weep holes, decks, utility entryways (e.g. electrical, cable TV) and wherever target pests are frequently found. Stations may also be placed along fence lines and property lines to intercept foraging pests. Regularly inspect all stations and replace bait as needed for continual control. Position Refillable Bait Stations in areas where they will not be damaged by lawn equipment such as mowers and trimmers. If the station is not equipped with a sticker to identify the contents, apply a sticker to the outside or inside of the station

2. BROADCAST APPLICATION: Broadcast this product uniformly at a rate of 1 oz per 1,800 sq ft (equivalent to 1.5 lbs/A).

3. FIRE ANTS¹ AND OTHER MOUND BUILDING ANTS²: Sprinkle approximately two tablespoons (1 oz) of bait around each mound. For best results, do not apply bait directly in or on the mound. Do not disturb the mound. Ants that are agitated may not feed on the bait.

FOR INDOOR USE

AVOID CONTAMINATION OF FOOD, FOOD CONTACT SURFACES AND FEEDSTUFFS. NOTE: Indoor applications are limited to areas that are inaccessible to children or pets, such as cracks, crevices, wall voids, unfinished attics, crawl spaces, refillable tamper-resistant bait stations, and behind electrical switch plates, within residential and non-residential buildings or structures and within non-food/non-feed areas of industrial, institutional, and commercial buildings. Non-food/non-feed areas include bedrooms, living rooms, bathrooms, closets, media rooms, garage rooms, lavatories, entries, vestibules, offices, locker rooms, machine rooms, boiler rooms, garages, mop closets, and storage (after canning or bottling).

Apply up to 0.5 oz (one tablespoon) of bait per crack, crevice or other inaccessible areas where insects may hide or live. Apply product using suitable application equipment (such as the Centro Bait Master.) Wipe up any loose or excess granules. Apply evenly in unfinished attics and crawl spaces at a rate of 0.5 oz per 100 sq ft only if the space is secured or otherwise inaccessible to children and domestic animals.

¹ German, American, Oriental, and Smoky Brown Roaches

² Native and Imported

³ Pavement, Field, Cornfield, and Harvester Ants

STORAGE AND DISPOSAL

Do not contaminate water, food, or feed by storage or disposal.

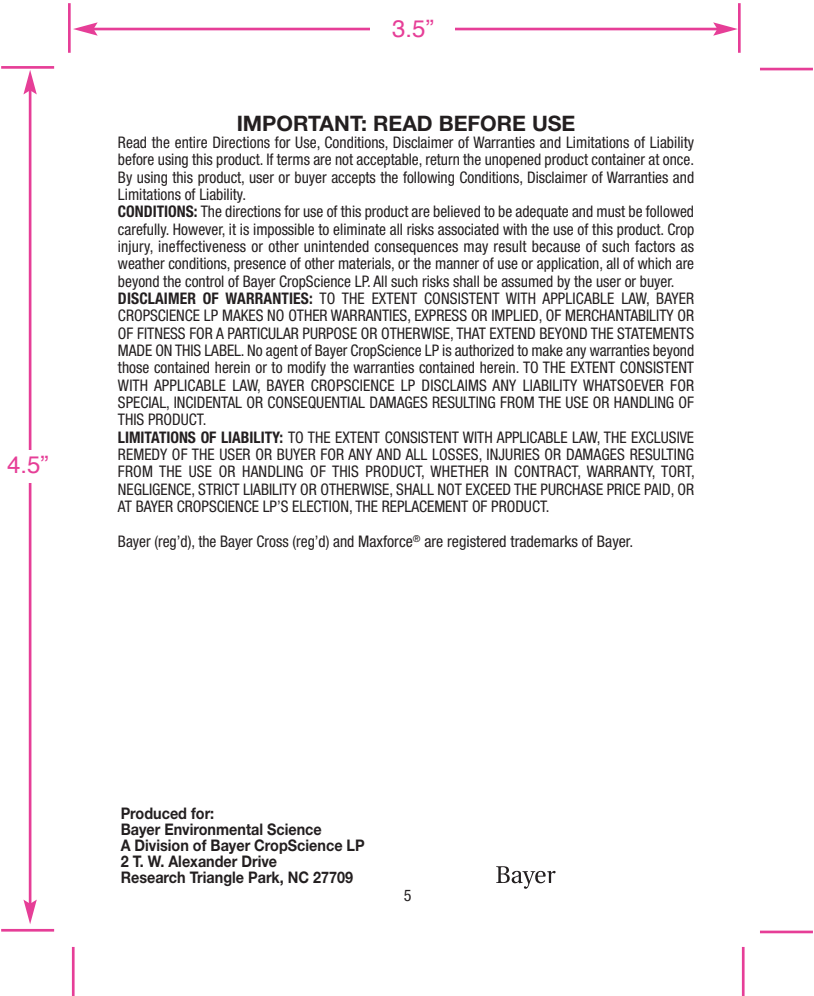
PESTICIDE STORAGE: Store in original container in a cool dry secure area (out of reach of children).

Keep container closed when not in use. Avoid contamination with other insecticides.

PESTICIDE DISPOSAL: Wastes resulting from the use of this product may be disposed of on-site or at an approved waste disposal facility.

CONTAINER HANDLING: Refillable service container

Refillable container. Refill this container with MAXFORCE COMPLETE BRAND GRANULAR INSECT BAIT only. Do not reuse this container for any other purpose. If empty: Place in trash or offer for recycling if available. If partly filled: Call your local solid waste agency for disposal instructions. Never place unused product down any indoor or outdoor drain.



IMPORTANT: READ BEFORE USE

Read the entire Directions for Use, Conditions, Disclaimer of Warranties and Limitations of Liability before using this product. If terms are not acceptable, return the unopened product container at once. By using this product, user or buyer accepts the following Conditions, Disclaimer of Warranties and Limitations of Liability.

CONDITIONS: The directions for use of this product are believed to be adequate and must be followed carefully. However, it is impossible to eliminate all risks associated with the use of this product. Crop injury, ineffectiveness or other unintended consequences may result because of such factors as weather conditions, presence of other materials, or the manner of use or application, all of which are beyond the control of Bayer CropScience LP. All such risks shall be assumed by the user or buyer.

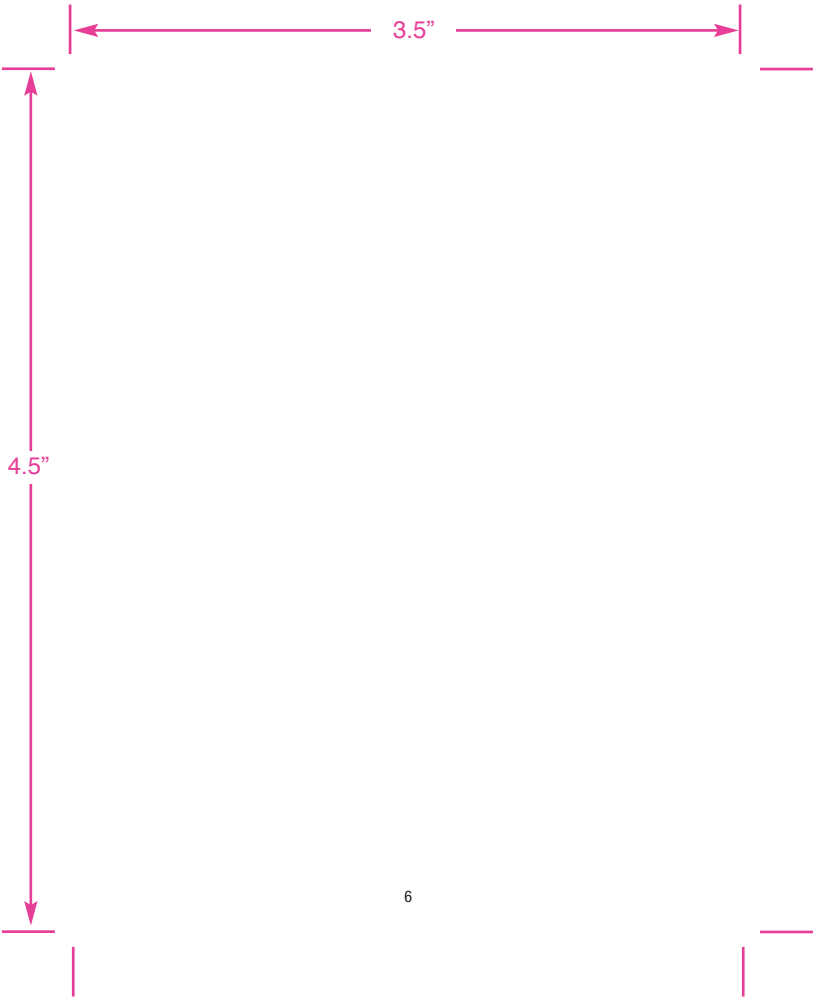
DISCLAIMER OF WARRANTIES: TO THE EXTENT CONSISTENT WITH APPLICABLE LAW, BAYER CROPSCIENCE LP MAKES NO OTHER WARRANTIES, EXPRESS OR IMPLIED, OF MERCHANTABILITY OR OF FITNESS FOR A PARTICULAR PURPOSE OR OTHERWISE, THAT EXTEND BEYOND THE STATEMENTS MADE ON THIS LABEL. No agent of Bayer CropScience LP is authorized to make any warranties beyond those contained herein or to modify the warranties contained herein. TO THE EXTENT CONSISTENT WITH APPLICABLE LAW, BAYER CROPSCIENCE LP DISCLAIMS ANY LIABILITY WHATSOEVER FOR SPECIAL, INCIDENTAL OR CONSEQUENTIAL DAMAGES RESULTING FROM THE USE OR HANDLING OF THIS PRODUCT.

LIMITATIONS OF LIABILITY: TO THE EXTENT CONSISTENT WITH APPLICABLE LAW, THE EXCLUSIVE REMEDY OF THE USER OR BUYER FOR ANY AND ALL LOSSES, INJURIES OR DAMAGES RESULTING FROM THE USE OR HANDLING OF THIS PRODUCT, WHETHER IN CONTRACT, WARRANTY, TORT, NEGLIGENCE, STRICT LIABILITY OR OTHERWISE, SHALL NOT EXCEED THE PURCHASE PRICE PAID, OR AT BAYER CROPSCIENCE LP'S ELECTION, THE REPLACEMENT OF PRODUCT.

Bayer (reg'd), the Bayer Cross (reg'd) and Maxforce® are registered trademarks of Bayer.

Produced for:
Bayer Environmental Science
A Division of Bayer CropScience LP
2 T. W. Alexander Drive
Research Triangle Park, NC 27709

Bayer



6.625"

3.5"

4.5"

FIRST AID

If on skin or clothing:	<ul style="list-style-type: none"> • Take off contaminated clothing. • Rinse skin immediately with plenty of water for 15-20 minutes. • Call a poison control center or doctor for treatment advice.
--------------------------------	---

Have the product container or label with you when calling a poison control center or doctor or going for treatment. You may also contact 1-800-334-7577 for emergency treatment information.

QUESTIONS? COMMENTS? Call: 1-800-331-2867.

**PRECAUTIONARY STATEMENTS
HAZARDS TO HUMANS AND DOMESTIC ANIMALS
CAUTION**

Harmful if absorbed through skin. Avoid contact with eyes, skin, or clothing. Prolonged or frequently repeated skin contact may cause allergic reaction in some individuals.

ENVIRONMENTAL HAZARDS

This product is toxic to fish. Do not apply directly to water, or to areas where surface water is present or to intertidal areas below the mean high water mark. Do not contaminate water when cleaning equipment or disposing of equipment washwaters.

STORAGE AND DISPOSAL

Do not contaminate water, food, or feed by storage or disposal.

PESTICIDE STORAGE: Store in original container in a cool dry secure area (out of reach of children).

Keep container closed when not in use. Avoid contamination with other insecticides.

PESTICIDE DISPOSAL: Wastes resulting from the use of this product may be disposed of on-site or at an approved waste disposal facility.

CONTAINER HANDLING: Refillable service container

Refillable container. Refill this container with MAXFORCE COMPLETE BRAND GRANULAR INSECT BAIT only. Do not reuse this container for any other purpose. If empty: Place in trash or offer for recycling if available. If partly filled: Call your local solid waste agency for disposal instructions. Never place unused product down any indoor or outdoor drain.



(01)00785740196632

Produced for:
Bayer Environmental Science
A Division of Bayer CropScience LP
2 T. W. Alexander Drive
Research Triangle Park, NC 27709



Maxforce[®]
COMPLETE

BRAND **GRANULAR INSECT BAIT**

FOR INDOOR AND OUTDOOR CONTROL OF ANTS, CRICKETS AND ROACHES*

FOR USE IN AND AROUND STRUCTURES AND RESIDENTIAL AREAS

ACTIVE INGREDIENTS:

Hydramethylnon†: tetrahydro-5, 5-dimethyl-2(1H)-pyrimidinone,
(3-(4-(trifluoromethyl) phenyl)-1-(2-(4-(trifluoromethyl) phenyl)

ethenyl)-2-propenylidene) hydrazine..... 1.00%

OTHER INGREDIENTS:..... 99.00%

TOTAL:..... 100.00%

†CAS No. 67485-29-4

EPA Reg. No. 432-1255

EPA Est. No. 67572-GA-1

**KEEP OUT OF REACH OF CHILDREN
CAUTION**

PRECAUTION: AL USUARIO: Si usted no lee ingles no use este producto hasta que la etiqueta le haya sido explicada ampliamente.

See inside leaflet for complete First Aid Instructions, Precautionary Statements, Directions for Use and Storage and Disposal Instructions.

Net Weight
8 Ounces (227 g)
79898851
80021658C 140307AV1



Maxforce[®] COMPLETE

BRAND GRANULAR INSECT BAIT

FOR INDOOR AND OUTDOOR CONTROL OF ANTS, CRICKETS AND ROACHES¹
FOR USE IN AND AROUND STRUCTURES AND RESIDENTIAL AREAS

ACTIVE INGREDIENTS:

Hydramethylnon†: tetrahydro-5, 5-dimethyl-2(1H)-pyrimidinone, (3-(4-(trifluoromethyl) phenyl)-1-(2-(4-(trifluoromethyl) phenyl) ethenyl)-2-propenylidene) hydrazine 1.00%

OTHER INGREDIENTS: 99.00%

TOTAL: 100.00%

†CAS No. 67485-29-4

EPA Reg. No. 432-1255

EPA Est. No. 67572-GA-1

KEEP OUT OF REACH OF CHILDREN CAUTION

PRECAUTION: AL USUARIO: Si usted no lee ingles no use este producto hasta que la etiqueta le haya sido explicada ampliamente.

FIRST AID

If on skin or clothing:

- Take off contaminated clothing.
- Rinse skin immediately with plenty of water for 15-20 minutes.
- Call a poison control center or doctor for treatment advice.

Have the product container or label with you when calling a poison control center or doctor or going for treatment. You may also contact 1-800-334-7577 for emergency treatment information.

QUESTIONS? COMMENTS? Call: 1-800-331-2867.

This MAXFORCE[®] COMPLETE BRAND GRANULAR INSECT BAIT controls
Roaches¹ Crickets Silverfish Firebrats Earwigs

Ants

including the following ant species:

Acrobat Big Headed Cornfield Field Ghost Odorous Pavement Thief
Argentine Carpenter Crazy Fire² Harvester House Pharaoh

¹ German, American, Oriental and Smoky Brown Roaches.

² Native and imported fire ants

PRECAUTIONARY STATEMENTS

HAZARDS TO HUMANS AND DOMESTIC ANIMALS

CAUTION

Harmful if absorbed through skin. Avoid contact with eyes, skin or clothing. Prolonged or frequently repeated skin contact may cause allergic reaction in some individuals.

Personal Protective Equipment (PPE)

Applicators and handlers must wear: Shoes plus socks.

Follow manufacturer's instruction for cleaning/maintaining PPE. If no such instructions for washables exist, use detergent and hot water. Keep and wash PPE separately from other laundry.

USER SAFETY RECOMMENDATIONS

User should wash hands before eating, drinking, chewing gum, using tobacco, or using the toilet. Users should remove clothing/PPE immediately if pesticide gets inside. Then wash thoroughly and put on clean clothing.

Users should remove PPE immediately after handling this product. As soon as possible, wash thoroughly and change into clean clothing.

ENVIRONMENTAL HAZARDS

This product is toxic to fish. Do not apply directly to water, or to areas where surface water is present or to intertidal areas below the mean high water mark. Do not contaminate water when cleaning equipment or disposing of equipment washwaters.

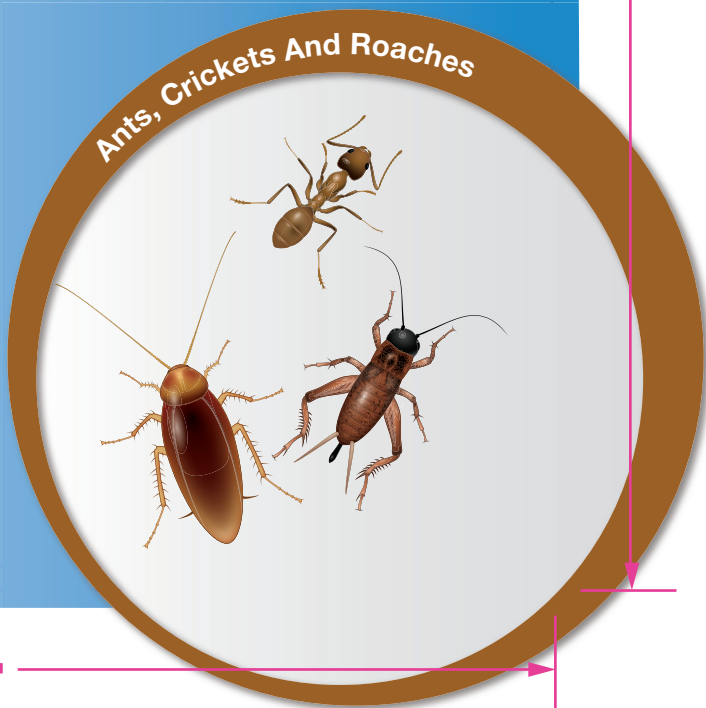
See back panel label for additional precautions and directions for use.

Net Contents
4 Pounds
(1.81 kg)

79649886
79924380E 140307AV1

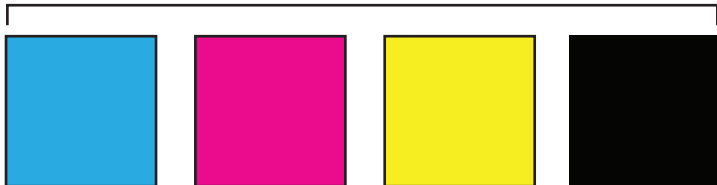
Bayer

Produced for:
Bayer Environmental Science
A Division of Bayer CropScience LP
2 T. W. Alexander Drive
Research Triangle Park, NC 27709



Process

Spot



CYAN

MAGENTA

YELLOW

BLACK

PMS 1395C

6.05"



Maxforce[®] COMPLETE

BRAND **GRANULAR INSECT BAIT**

may be sprinkled around structures and/or applied to refillable/serviceable bait stations as outlined below. Sprinkle this product evenly in a 1 - 2 foot wide band adjacent to the structure at a rate of 0.5 oz (one tablespoon) of bait per 25 linear feet. NOTE: Around structures the total application should not exceed 4 - 8 oz per 200-400 linear feet (or 0.5 oz per 25 linear feet). A typical application would be 4 - 8 oz adjacent to an average sized home of 200-400 linear feet. Be sure to treat areas such as porches, patios, driveways, sidewalks, flower gardens, landscape timbers and around trees, wood piles, air conditioning units and garbage receptacles. **DO NOT USE ON EDIBLE FOOD CROPS OR ON AREAS INTENDED FOR EDIBLE FOOD CROP PRODUCTION.** Treat visible ant trails as well as cracks or crevices where insects (ants, roaches, crickets) may enter a structure.

REFILLABLE STATIONS: MAXFORCE COMPLETE BRAND GRANULAR INSECT BAIT may be placed into refillable tamper resistant bait stations. Place up to 1 to 3 oz (2 to 6 Tbsp.) of bait into tamper resistant stations and close securely after application. During follow-up visits inspect placements and reapply as needed. Refillable tamper resistant stations should be placed every 20 - 30 feet around the perimeter of a structure. Use approximately 2 stations per side of a typical single family home. For best results, place stations near: air conditioning units, water faucets, foundation vents and weep holes, decks, utility entryways (e.g. electrical, cable TV) and wherever target pests are frequently found. Stations may also be placed along fence lines and property lines to intercept foraging pests. Regularly inspect all stations and replace bait as needed for continual control. Position Refillable Bait Stations in areas where they will not be damaged by lawn equipment such as mowers and trimmers. If the station is not equipped with a sticker to identify the contents, apply a sticker to the outside or inside of the station.

2. BROADCAST APPLICATION: Broadcast this product uniformly at a rate of 1 oz per 1,800 sq ft (equivalent to 1.5 lbs/A).

3. FIRE ANTS² AND OTHER MOUND BUILDING ANTS²: Sprinkle approximately two tablespoons (1 oz) of bait around each mound. For best results, do not apply bait directly in or on the mound. Do not disturb the mound. Ants that are agitated may not feed on the bait.

FOR INDOOR USE

AVOID CONTAMINATION OF FOOD, FOOD CONTACT SURFACES AND FEEDSTUFFS. NOTE: Indoor applications are limited to areas that are inaccessible to children or pets, such as cracks, crevices, wall voids, unfinished attics, crawl spaces, refillable tamper-resistant bait stations, and behind electrical switch plates, within residential and non-residential buildings or structures and within non-food/non-feed areas of industrial, institutional, and commercial buildings. Non-food/non-feed areas include bedrooms, living rooms, bathrooms, closets, media rooms, garbage rooms, lavatories, entries, vestibules, offices, locker rooms, machine rooms, boiler rooms, garages, mop closets, and storage (after canning or bottling).

Apply up to 0.5 oz (one tablespoon) of bait per crack, crevice or other inaccessible areas where insects may hide or live. Apply product using suitable application equipment (such as the Centro Bait Master). Wipe up any loose or excess granules. Apply evenly in unfinished attics and crawl spaces at a rate of 0.5 oz per 100 sq ft only if the space is secured or otherwise inaccessible to children and domestic animals.

¹ German, American, Oriental, and Smoky Brown Roaches
² Native and Imported
³ Pavement, Field, Cornfield, and Harvester Ants

STORAGE AND DISPOSAL

Do not contaminate water, food, or feed by storage or disposal.

PESTICIDE STORAGE: Store in original container in a cool dry secure area (out of reach of children).

Keep container closed when not in use. Avoid contamination with other insecticides.

PESTICIDE DISPOSAL: Wastes resulting from the use of this product may be disposed of on-site or at an approved waste disposal facility.

CONTAINER HANDLING: Non-refillable container. Do not reuse or refill this container. Offer for recycling, if available. If empty: Place in trash or offer for recycling if available. If partly filled: Call your local solid waste agency for disposal instructions. Never place unused product down any indoor or outdoor drain.

IMPORTANT: READ BEFORE USE

Read the entire Directions for Use, Conditions, Disclaimer of Warranties and Limitations of Liability before using this product. If terms are not acceptable, return the unopened product container at once.

By using this product, user or buyer accepts the following Conditions, Disclaimer of Warranties and Limitations of Liability.

CONDITIONS: The directions for use of this product are believed to be adequate and must be followed carefully. However, it is impossible to eliminate all risks associated with the use of this product. Crop injury, ineffectiveness or other unintended consequences may result because of such factors as weather conditions, presence of other materials, or the manner of use or application, all of which are beyond the control of Bayer CropScience LP. All such risks shall be assumed by the user or buyer.

DISCLAIMER OF WARRANTIES: TO THE EXTENT CONSISTENT WITH APPLICABLE LAW, BAYER CROPSCIENCE LP MAKES NO OTHER WARRANTIES, EXPRESS OR IMPLIED, OF MERCHANTABILITY OR OF FITNESS FOR A PARTICULAR PURPOSE OR OTHERWISE, THAT EXTEND BEYOND THE STATEMENTS MADE ON THIS LABEL. No agent of Bayer CropScience LP is authorized to make any warranties beyond those contained herein or to modify the warranties contained herein. TO THE EXTENT CONSISTENT WITH APPLICABLE LAW, BAYER CROPSCIENCE LP DISCLAIMS ANY LIABILITY WHATSOEVER FOR SPECIAL, INCIDENTAL OR CONSEQUENTIAL DAMAGES RESULTING FROM THE USE OR HANDLING OF THIS PRODUCT.

LIMITATIONS OF LIABILITY: TO THE EXTENT CONSISTENT WITH APPLICABLE LAW, THE EXCLUSIVE REMEDY OF THE USER OR BUYER FOR ANY AND ALL LOSSES, INJURIES OR DAMAGES RESULTING FROM THE USE OR HANDLING OF THIS PRODUCT, WHETHER IN CONTRACT, WARRANTY, TORT, NEGLIGENCE, STRICT LIABILITY OR OTHERWISE, SHALL NOT EXCEED THE PURCHASE PRICE PAID, OR AT BAYER CROPSCIENCE LP'S ELECTION, THE REPLACEMENT OF PRODUCT.

Bayer (reg'd), the Bayer Cross (reg'd) and Maxforce[®] are registered trademarks of Bayer.



79850379D 140307AV1

8.00"

7.75"

PRODUCT INFORMATION

MAXFORCE COMPLETE BRAND GRANULAR INSECT BAIT is a ready-to-use product for use indoors and outdoors and around buildings, on lawns, and other non-crop areas such as residential areas, the non-food/non-feed areas of institutional and commercial establishments including warehouses, restaurants, food processing plants, supermarkets, hospitals, nursing homes, motels, hotels, apartment buildings, schools, laboratories, computer facilities, pet shops, zoos, sewers, highway rights-of-way and medians, traffic islands, utility rights-of-way (including power lines, pipelines, aqueducts) managed turf areas (non-crop) (including school yards, playgrounds, athletic fields, amusement parks, picnic areas, recreation areas, office parks, industrial grounds, airports, shopping centers, public parks, arboretums, public gardens, monument sites, cemeteries and mausoleums, golf courses, race tracks, fairgrounds, outdoor amphitheaters, sod farms, and ornamental nurseries). Do not graze or feed lawn or sod clippings to livestock. MAXFORCE COMPLETE BRAND GRANULAR INSECT BAIT contains a special blend of foods, combined with the delayed-action stomach poison, hydramethylnon. The delayed action of the active ingredient allows foraging ants to bring the bait back to the nest so that the entire colony, including the queen, is destroyed. When properly used, this bait will control many of the following insects, including ants, cockroaches¹, crickets, and silverfish before they can enter a structure. Expect to see fewer insects within a week.

MAXFORCE COMPLETE BRAND GRANULAR INSECT BAIT bulk container may be used on the job site or to fill this product's refillable service containers. The bulk container will refill approximately 8 refillable service containers. Reuse only those service containers with current and legible labels.

APPLICATION RESTRICTIONS

Do not apply this product by any method not specified on this label. The use of this product on pasture and rangeland is unlawful. Do not graze or feed lawn or sod clippings to livestock. **DO NOT USE ON EDIBLE FOOD CROPS OR ON AREAS INTENDED FOR EDIBLE FOOD CROP PRODUCTION.** Not for use in USDA meat and poultry plants. Do not apply other insecticides (such as aerosols, sprays, etc.) on top or in close proximity to this product, as it will reduce effectiveness. **Not for use in the state of California.**

DIRECTIONS FOR USE

It is a violation of Federal law to use this product in a manner inconsistent with its labeling.

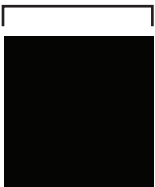
APPLICATION INSTRUCTIONS

KEEP PEOPLE AND PETS OUT OF AREA DURING APPLICATION FOR OUTDOOR USE

1. AROUND STRUCTURES: MAXFORCE COMPLETE BRAND GRANULAR INSECT BAIT

6.30"

Process



BLACK



Maxforce[®] COMPLETE

BRAND GRANULAR INSECT BAIT

FOR INDOOR AND OUTDOOR CONTROL OF ANTS, CRICKETS AND ROACHES¹
FOR USE IN AND AROUND STRUCTURES AND RESIDENTIAL AREAS

ACTIVE INGREDIENTS:

Hydramethylnon†: tetrahydro-5, 5-dimethyl-2(1H)-pyrimidinone, (3-(4-(trifluoromethyl) phenyl)

-1-(2-(4-(trifluoromethyl) phenyl) ethenyl)-2-propenylidene) hydrazine 1.00%

OTHER INGREDIENTS: 99.00%

TOTAL: 100.00%

†CAS No. 67485-29-4

EPA Reg. No. 432-1255

EPA Est. No. 67572-GA-1

KEEP OUT OF REACH OF CHILDREN CAUTION

PRECAUTION: AL USUARIO: Si usted no lee ingles no use este producto hasta que la etiqueta le haya sido explicada ampliamente.

FIRST AID

If on skin or clothing:

- Take off contaminated clothing.
- Rinse skin immediately with plenty of water for 15-20 minutes.
- Call a poison control center or doctor for treatment advice.

Have the product container or label with you when calling a poison control center or doctor or going for treatment. You may also contact 1-800-334-7577 for emergency treatment information.

QUESTIONS? COMMENTS? Call: 1-800-331-2867.

This MAXFORCE[®] COMPLETE BRAND GRANULAR INSECT BAIT controls
Roaches¹ Crickets Silverfish Firebrats Earwigs

Ants including the following ant species:
Acrobat Big Headed Cornfield Field Ghost Odorous Pavement Thief
Argentine Carpenter Crazy Fire² Harvester House Pharaoh

¹ German, American, Oriental and Smoky Brown Roaches.
² Native and imported fire ants

PRECAUTIONARY STATEMENTS

HAZARDS TO HUMANS AND DOMESTIC ANIMALS

CAUTION

Harmful if absorbed through skin. Avoid contact with eyes, skin, or clothing. Prolonged or frequently repeated skin contact may cause allergic reaction in some individuals.

Personal Protective Equipment (PPE)

Applicators and handlers must wear: Shoes plus socks.
Follow manufacturer's instruction for cleaning/maintaining PPE. If no such instructions for washables exist, use detergent and hot water. Keep and wash PPE separately from other laundry.

USER SAFETY RECOMMENDATIONS

User should wash hands before eating, drinking, chewing gum, using tobacco, or using the toilet.
Users should remove clothing/PPE immediately if pesticide gets inside. Then wash thoroughly and put on clean clothing.
Users should remove PPE immediately after handling this product. As soon as possible, wash thoroughly and change into clean clothing.

ENVIRONMENTAL HAZARDS

This product is toxic to fish. Do not apply directly to water, or to areas where surface water is present or to intertidal areas below the mean high water mark. Do not contaminate water when cleaning equipment or disposing of equipment washwaters.

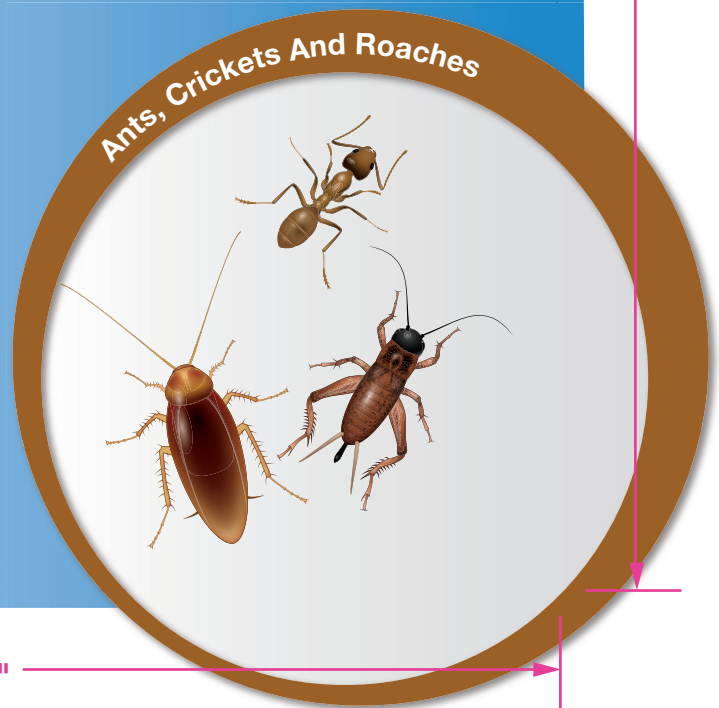
See back panel label for additional precautions and directions for use.

Net Contents
4 Pounds
(1.81 kg)

79649886
79924380E 140307AV1

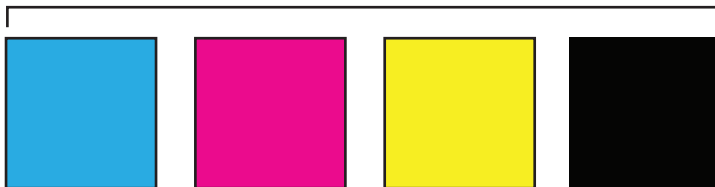


Produced for:
Bayer Environmental Science
A Division of Bayer CropScience LP
2 T. W. Alexander Drive
Research Triangle Park, NC 27709



Process

Spot



CYAN

MAGENTA

YELLOW

BLACK

PMS 1395C

6.05"



Maxforce[®] COMPLETE

BRAND **GRANULAR INSECT BAIT**

may be sprinkled around structures and/or applied to refillable/serviceable bait stations as outlined below. Sprinkle this product evenly in a 1 - 2 foot wide band adjacent to the structure at a rate of 0.5 oz (one tablespoon) of bait per 25 linear feet. NOTE: Around structures the total application should not exceed 4 - 8 oz per 200-400 linear feet (or 0.5 oz per 25 linear feet). A typical application would be 4 - 8 oz adjacent to an average sized home of 200-400 linear feet. Be sure to treat areas such as porches, patios, driveways, sidewalks, flower gardens, landscape timbers and around trees, wood piles, air conditioning units and garbage receptacles. **DO NOT USE ON EDIBLE FOOD CROPS OR ON AREAS INTENDED FOR EDIBLE FOOD CROP PRODUCTION.** Treat visible ant trails as well as cracks or crevices where insects (ants, roaches, crickets) may enter a structure.

REFILLABLE STATIONS: MAXFORCE COMPLETE BRAND GRANULAR INSECT BAIT may be placed into refillable tamper resistant bait stations. Place up to 1 to 3 oz (2 to 6 Tbsp.) of bait into tamper resistant stations and close securely after application. During follow-up visits inspect placements and reapply as needed. Refillable tamper resistant stations should be placed every 20 - 30 feet around the perimeter of a structure. Use approximately 2 stations per side of a typical single family home. For best results, place stations near: air conditioning units, water faucets, foundation vents and weep holes, decks, utility entryways (e.g. electrical, cable TV) and wherever target pests are frequently found. Stations may also be placed along fence lines and property lines to intercept foraging pests. Regularly inspect all stations and replace bait as needed for continual control. Position Refillable Bait Stations in areas where they will not be damaged by lawn equipment such as mowers and trimmers. If the station is not equipped with a sticker to identify the contents, apply a sticker to the outside or inside of the station.

2. BROADCAST APPLICATION: Broadcast this product uniformly at a rate of 1 oz per 1,800 sq ft (equivalent to 1.5 lbs/A).

3. FIRE ANTS² AND OTHER MOUND BUILDING ANTS³: Sprinkle approximately two tablespoons (1 oz) of bait around each mound. For best results, do not apply bait directly in or on the mound. Do not disturb the mound. Ants that are agitated may not feed on the bait.

FOR INDOOR USE

AVOID CONTAMINATION OF FOOD, FOOD CONTACT SURFACES AND FEEDSTUFFS. NOTE: Indoor applications are limited to areas that are inaccessible to children or pets, such as cracks, crevices, wall voids, unfinished attics, crawl spaces, refillable tamper-resistant bait stations, and behind electrical switch plates, within residential and non-residential buildings or structures and within non-food/non-feed areas of industrial, institutional, and commercial buildings. Non-food/non-feed areas include bedrooms, living rooms, bathrooms, closets, media rooms, garbage rooms, lavatories, entries, vestibules, offices, locker rooms, machine rooms, boiler rooms, garages, mop closets, and storage (after canning or bottling).

Apply up to 0.5 oz (one tablespoon) of bait per crack, crevice or other inaccessible areas where insects may hide or live. Apply product using suitable application equipment (such as the Centro Bait Master). Wipe up any loose or excess granules. Apply evenly in unfinished attics and crawl spaces at a rate of 0.5 oz per 100 sq ft only if the space is secured or otherwise inaccessible to children and domestic animals.

¹ German, American, Oriental, and Smoky Brown Roaches
² Native and Imported
³ Pavement, Field, Cornfield, and Harvester Ants

STORAGE AND DISPOSAL

Do not contaminate water, food, or feed by storage or disposal.

PESTICIDE STORAGE: Store in original container in a cool dry secure area (out of reach of children).

Keep container closed when not in use. Avoid contamination with other insecticides.

PESTICIDE DISPOSAL: Wastes resulting from the use of this product may be disposed of on-site or at an approved waste disposal facility.

CONTAINER HANDLING: Non-refillable container. Do not reuse or refill this container. Offer for recycling, if available. If empty: Place in trash or offer for recycling if available. If partly filled: Call your local solid waste agency for disposal instructions. Never place unused product down any indoor or outdoor drain.

IMPORTANT: READ BEFORE USE

Read the entire Directions for Use, Conditions, Disclaimer of Warranties and Limitations of Liability before using this product. If terms are not acceptable, return the unopened product container at once.

By using this product, user or buyer accepts the following Conditions, Disclaimer of Warranties and Limitations of Liability.

CONDITIONS: The directions for use of this product are believed to be adequate and must be followed carefully. However, it is impossible to eliminate all risks associated with the use of this product. Crop injury, ineffectiveness or other unintended consequences may result because of such factors as weather conditions, presence of other materials, or the manner of use or application, all of which are beyond the control of Bayer CropScience LP. All such risks shall be assumed by the user or buyer.

DISCLAIMER OF WARRANTIES: TO THE EXTENT CONSISTENT WITH APPLICABLE LAW, BAYER CROPSCIENCE LP MAKES NO OTHER WARRANTIES, EXPRESS OR IMPLIED, OF MERCHANTABILITY OR FITNESS FOR A PARTICULAR PURPOSE OR OTHERWISE, THAT EXTEND BEYOND THE STATEMENTS MADE ON THIS LABEL. No agent of Bayer CropScience LP is authorized to make any warranties beyond those contained herein or to modify the warranties contained herein. TO THE EXTENT CONSISTENT WITH APPLICABLE LAW, BAYER CROPSCIENCE LP DISCLAIMS ANY LIABILITY WHATSOEVER FOR SPECIAL, INCIDENTAL OR CONSEQUENTIAL DAMAGES RESULTING FROM THE USE OR HANDLING OF THIS PRODUCT.

LIMITATIONS OF LIABILITY: TO THE EXTENT CONSISTENT WITH APPLICABLE LAW, THE EXCLUSIVE REMEDY OF THE USER OR BUYER FOR ANY AND ALL LOSSES, INJURIES OR DAMAGES RESULTING FROM THE USE OR HANDLING OF THIS PRODUCT, WHETHER IN CONTRACT, WARRANTY, TORT, NEGLIGENCE, STRICT LIABILITY OR OTHERWISE, SHALL NOT EXCEED THE PURCHASE PRICE PAID, OR AT BAYER CROPSCIENCE LP'S ELECTION, THE REPLACEMENT OF PRODUCT.

Bayer (reg'd), the Bayer Cross (reg'd) and Maxforce[®] are registered trademarks of Bayer.



79850379D 140307AV1

PRODUCT INFORMATION

MAXFORCE COMPLETE BRAND GRANULAR INSECT BAIT is a ready-to-use product for use indoors and outdoors and around buildings, on lawns, and other non-crop areas such as residential areas, the non-food/non-feed areas of institutional and commercial establishments including warehouses, restaurants, food processing plants, supermarkets, hospitals, nursing homes, motels, hotels, apartment buildings, schools, laboratories, computer facilities, pet shops, zoos, sewers, highway rights-of-way and medians, traffic islands, utility rights-of-way (including power lines, pipelines, aqueducts) managed turf areas (non-crop) (including school yards, playgrounds, athletic fields, amusement parks, picnic areas, recreation areas, office parks, industrial grounds, airports, shopping centers, public parks, arboretums, public gardens, monument sites, cemeteries and mausoleums, golf courses, race tracks, fairgrounds, outdoor amphitheaters, sod farms, and ornamental nurseries). Do not graze or feed lawn or sod clippings to livestock. MAXFORCE COMPLETE BRAND GRANULAR INSECT BAIT contains a special blend of foods, combined with the delayed-action stomach poison, hydramethylnon. The delayed action of the active ingredient allows foraging ants to bring the bait back to the nest so that the entire colony, including the queen, is destroyed. When properly used, this bait will control many of the following insects, including ants, cockroaches¹, crickets, and silverfish before they can enter a structure. Expect to see fewer insects within a week.

MAXFORCE COMPLETE BRAND GRANULAR INSECT BAIT bulk container may be used on the job site or to fill this product's refillable service containers. The bulk container will refill approximately 8 refillable service containers. Reuse only those service containers with current and legible labels.

APPLICATION RESTRICTIONS

Do not apply this product by any method not specified on this label. The use of this product on pasture and rangeland is unlawful. Do not graze or feed lawn or sod clippings to livestock. **DO NOT USE ON EDIBLE FOOD CROPS OR ON AREAS INTENDED FOR EDIBLE FOOD CROP PRODUCTION.** Not for use in USDA meat and poultry plants. Do not apply other insecticides (such as aerosols, sprays, etc.) on top or in close proximity to this product, as it will reduce effectiveness. Not for use in the state of California.

DIRECTIONS FOR USE

It is a violation of Federal law to use this product in a manner inconsistent with its labeling.

APPLICATION INSTRUCTIONS

KEEP PEOPLE AND PETS OUT OF AREA DURING APPLICATION FOR OUTDOOR USE

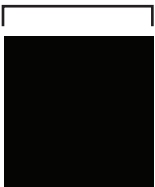
1. AROUND STRUCTURES: MAXFORCE COMPLETE BRAND GRANULAR INSECT BAIT

8.00"

7.75"

6.30"

Process



BLACK